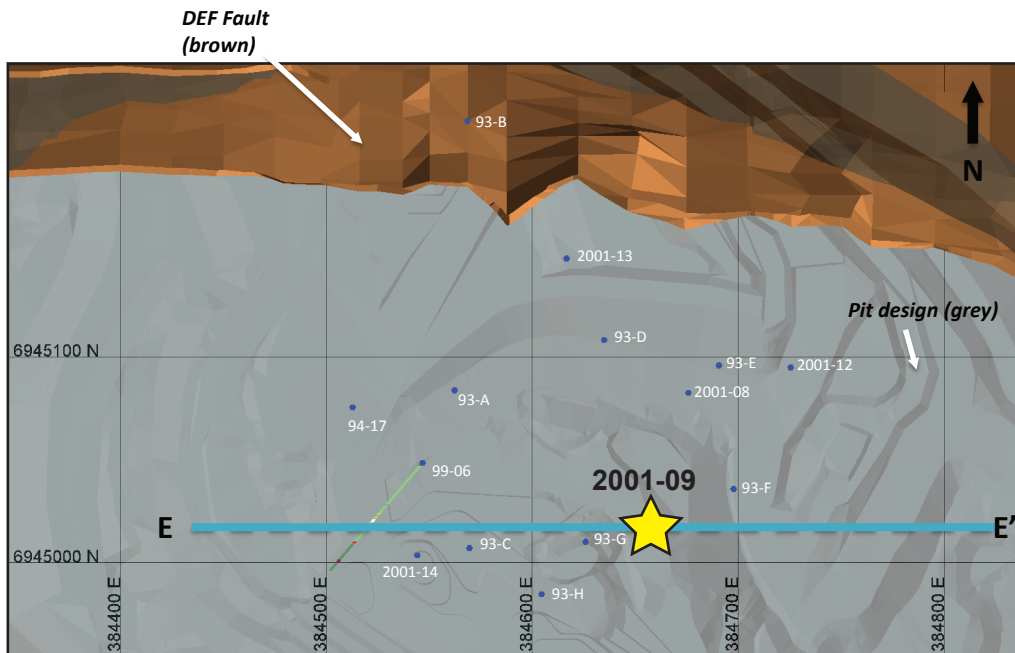


## Minto deposit (Yukon MINFILE 115I 021, 022)

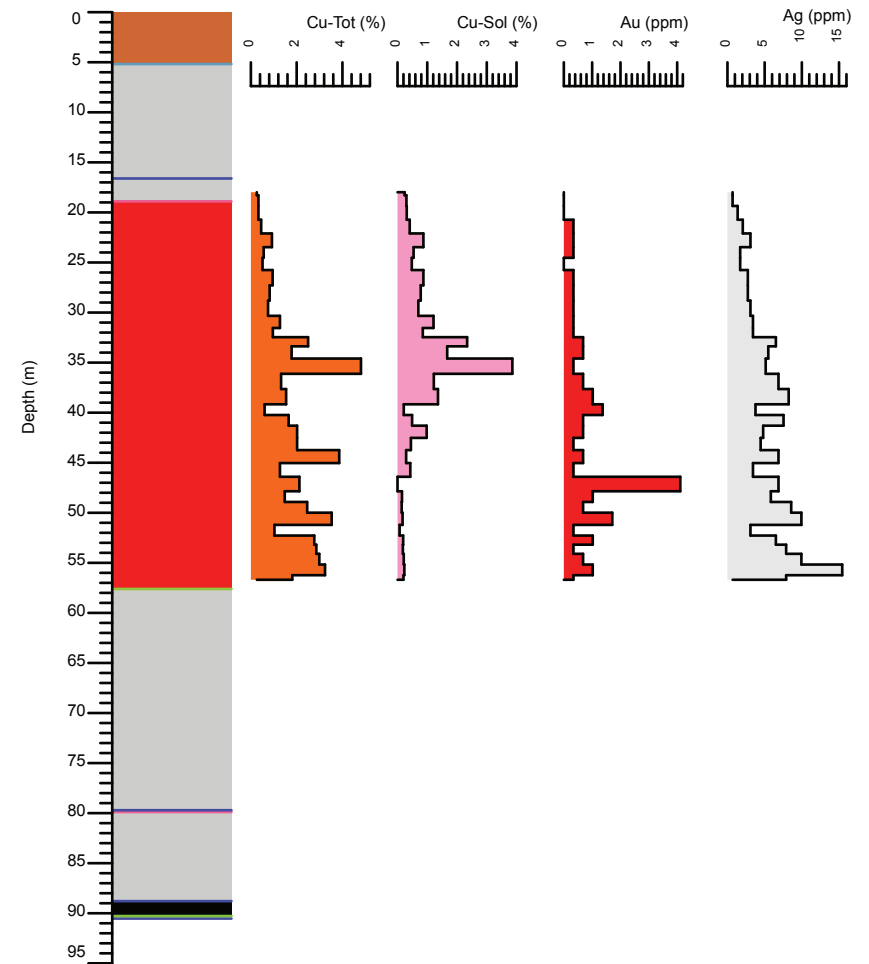
### Drill Hole: 2001-09, Minto Main deposit

Area	Hole No.	Azimuth	Dip	Length (m)	Collar coordinates (NAD83, Zn 8)
Minto Main	2001-09	0	-90	90.53	384655mE, 6945016mN



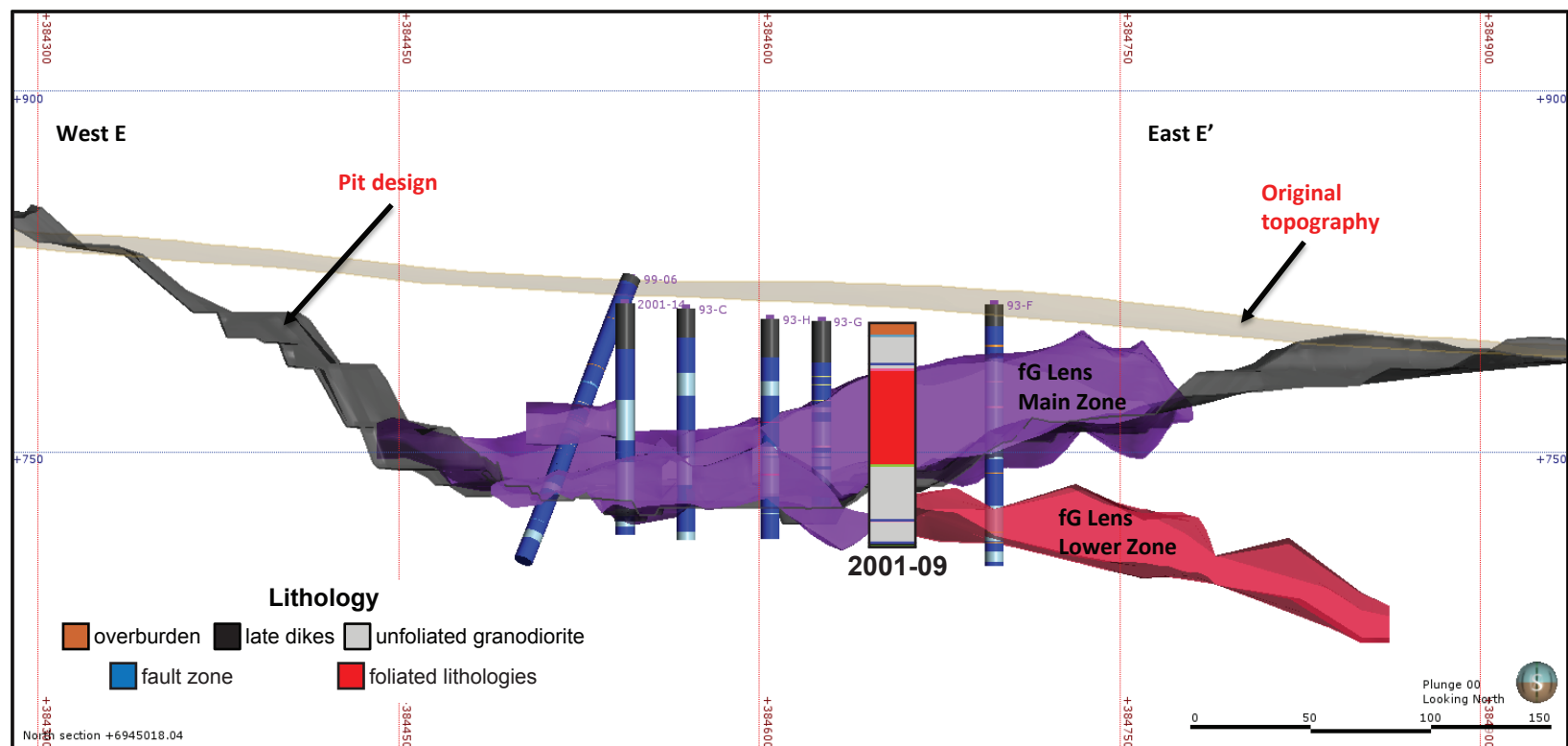
Above: Orthophoto of Minto area. Collar location of 2001-09 shown by yellow star, blue circles show collar locations of other drill holes in YGS collection.

Right: Simplified strip log with selected assays.



#### Lithology

- overburden
- late dikes
- unfoliated granodiorite
- fault zone
- foliated lithologies



Above: Simplified vertical east-west cross-section through the Minto Main pit.

Right: Selected assays through Minto Main zone. Cu - Tot = sulphide and non-sulphide copper, Cu-Sol = non-sulphide copper

Hole	From (m)	To (m)	Interval (m)	Sample	Cu (%)	Cu-Sol (%)	Au (ppm)	Ag (ppm)
2001-09	26.52	28.04	1.52	27108	1.0	0.9	0.3	2.7
2001-09	28.04	29.57	1.53	27109	0.8	0.8	0.3	2.7
2001-09	29.57	31.09	1.52	27110	0.8	0.7	0.3	3.1
2001-09	31.09	32	0.91	27111	1.3	1.2	0.3	3.4
2001-09	32	32.92	0.92	27112	1.0	0.9	0.3	3.4
2001-09	32.92	33.83	0.91	27113	2.5	2.3	0.7	6.5
2001-09	33.83	35.36	1.53	27116	1.8	1.7	0.7	5.5
2001-09	35.36	36.88	1.52	27117	4.8	3.9	0.3	5.1
2001-09	36.88	38.4	1.52	27118	1.3	1.2	0.7	6.9
2001-09	38.4	39.93	1.53	27119	1.5	1.4	1.0	8.2
2001-09	39.93	40.54	0.61	27332	0.6	0.2	1.4	3.8
2001-09	40.54	42.06	1.52	27333	1.7	0.5	0.7	7.5